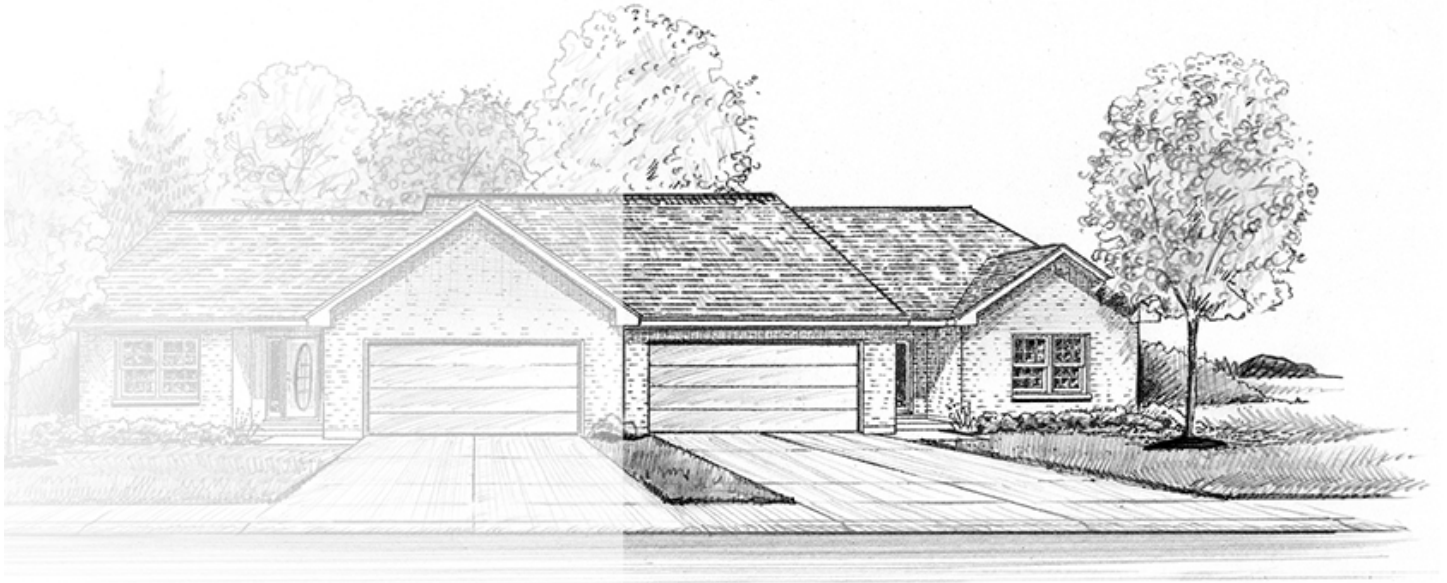


Piper's Pine



THE MASON

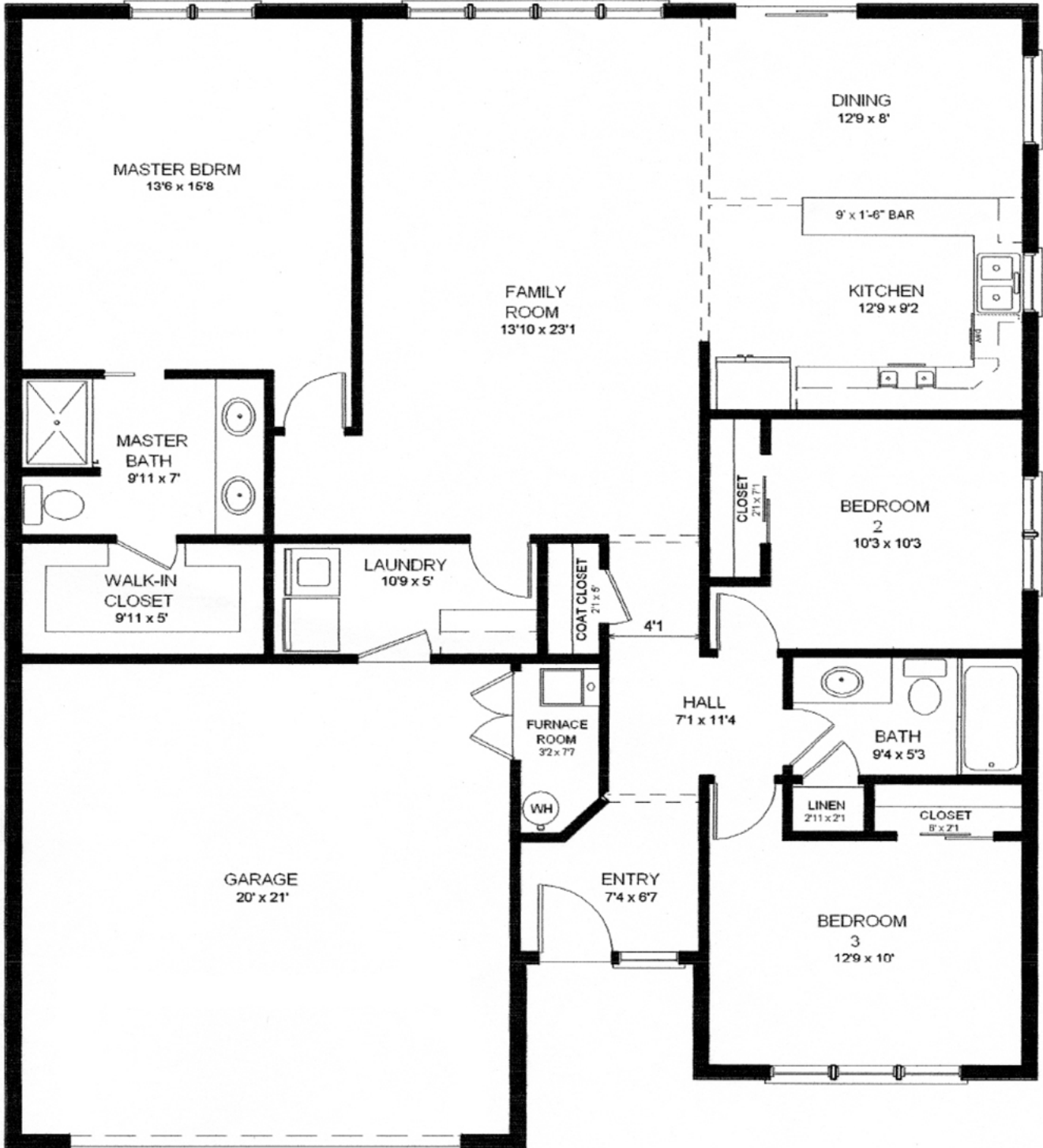
**Includes All The Quality Features Standard To Our Homes
Energy Efficient + Fully Maintained**

3 Bedroom | 2 Bath | 2 Car Garage
1,542 Sq. Ft. | Open Floor Plan
10' X 12' Patio

New Construction on Your Choice of Lot

THE MASON

1,5442 Sq. Ft.





BUILDING SPECIFICATIONS

These quality features are standard on every home:

- Brick Exterior
- 'Pella' Windows
- Concrete Patio
- Concrete Driveway
- 30 Year Roof Shingles
- Continuous Aluminum Gutters
- No Inside Steps
- Solid Core Interior Doors
- Solid Wood Trim
- Wood Raised Panel Cabinets
- Insulated and Drywalled Garage
- Insulated Garage Doors with Electric Opener
- High Efficiency Furnace and Air Conditioner
- Radon Abatement System
- 40 Gallon Gas Water Heater
- Plumbing for Water Softener
- Moen Plumbing Fixtures with Lifetime Warranty
- Lever Handle Faucets
- 'Quiet Series' Bath Fans
- Preinstalled Dryer Vent to Outside
- Recessed Lighting in Kitchen
- Insulated Concrete Foundation
- Sealed Wall System to Eliminate Air Infiltration
- Dense Fill Cellulose Insulation
- Sherwin Williams Super Paint

Available options include:

- Water Softener
- 'California' Closet Shelving
- Covered Patio
- Custom Kitchens and Interior Trim
- Pull Down Stairs with Attic Storage
- Gas Fireplace